

# MIKIMOTO

## Neck-Decollete and Hand Cream

produced by  
MIKIMOTO COSMETICS

### Luxurious skin radiating a lustrous\* shimmer reminiscent of pearls

Just as jewellery makes your skin luminous,

so should your skin illuminate your jewellery.

It is this concept of mutually uplifting beauty that inspired

the Mikimoto Neck-Decollete and Hand Cream.

Our unique formula is tailored especially toward the neck, decollete and hands, whose skin structure differs from that of the face. This helps achieve glowing skin, which also has elasticity. Velvety to the touch, it blends into your skin effortlessly, and imparts a sense of

luxuriousness in everything from its mystical,

pearl-like fragrance to the comfort of its touch.

Lustrous\* skin that makes your jewellery shimmer

•We utilize a unique formula to make your neck, decollete and hands alluringly beautiful. Your skin will feel richly moist, with a supple, elastic texture.

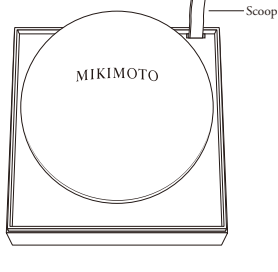
•Achieve clear, glowing skin\* that frames your jewellery gorgeously.

Sense of luxuriousness that you will feel deep inside

•Luxuriant to the touch, our cream sinks deep inside your skin and imparts a lustrousness\* each time you use it.

•Envelop your skin in its mystical aroma, reminiscent of Mikimoto Eau de Parfum's pearl-like fragrance.

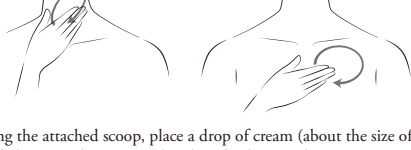
\*Refers to a sheen.



Please make sure to always keep the attached scoop clean before use.

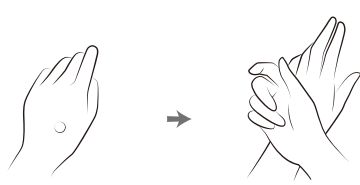
You may also use it standing up, as pictured.

#### Instructions for use



Using the attached scoop, place a drop of cream (about the size of a single large pearl) into your hand, and rub it gently into your neck and decollete. Apply to the right side using your left hand, and vice versa.

When using a product to protect against ultraviolet rays, please do so after the cream has been worked thoroughly into your skin.



Take another drop of cream the size of a large pearl, and rub it gently into your hands.

Be sure to apply frequently if you feel your skin becoming dry during the daytime.

#### Instructions for use (before putting on jewellery)



Take a drop of cream (about the size of a single large pearl), and rub it gently into your hands.

Be sure to apply frequently if you feel your skin becoming dry during the daytime.



Continue gently rubbing the cream into your neck and decollete. Apply to the right side using your left hand, and vice versa. Before putting on jewellery, press the applied area lightly with your palm and gently rub any remaining cream into your skin.

When using a product to protect against ultraviolet rays, please do so after the cream has been worked thoroughly into your skin.

#### Note:

•Please make sure to pay close attention to any potential skin reactions when using this cream. The following symptoms may occur when a cosmetic product is not suitable for the skin, and in such cases, we ask that you please discontinue use immediately:

Skin irregularities including reddening, swelling, itching,

irritation, color loss (white patches), darkening, etc. that occur

at the time the cream is applied, or when subsequently coming

into contact with direct sunlight.

Symptoms may worsen if the cosmetic product continues to be

applied, and in this case, we recommend that you consult a skin

doctor.

•In the case of irregularities such as wounds, swelling, eczema,

irritation, soreness, etc., please discontinue usage in that region of

the skin.

•Please take care not to get the cream into your eyes. Should this

occur, do not rub it in. Instead, immediately wash out the affected

eye with cool or warm water. Should pain or the feeling of a

foreign object remaining in the eye continue even after washing,

please consult an eye doctor.

•Please do not store the cream in an area with excessively hot or

cold temperatures, or with direct sunlight.

•Please make sure to close the cap tightly following each use.

•Please keep cream in an area where children are not able to reach it.

◇An allergy test on this product has been completed.

(We cannot guarantee, however, that allergies to this product will not occur.)